

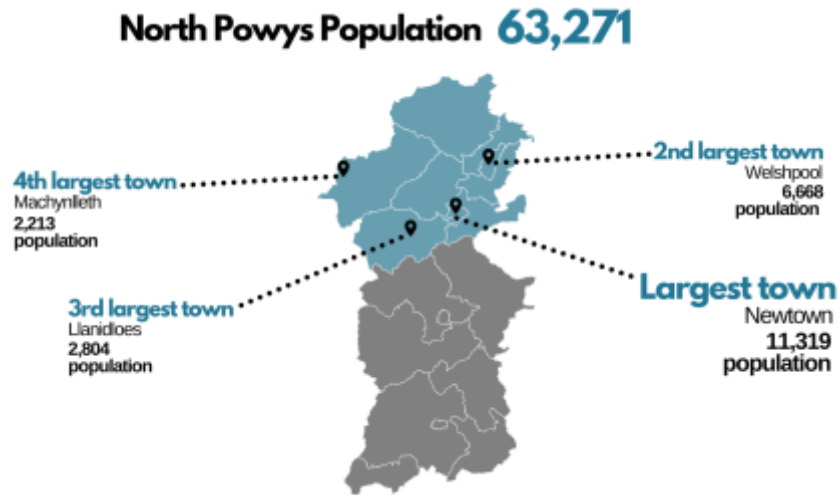
North Powys

What areas are in North Powys?

Select an area on the map to find out where it is located

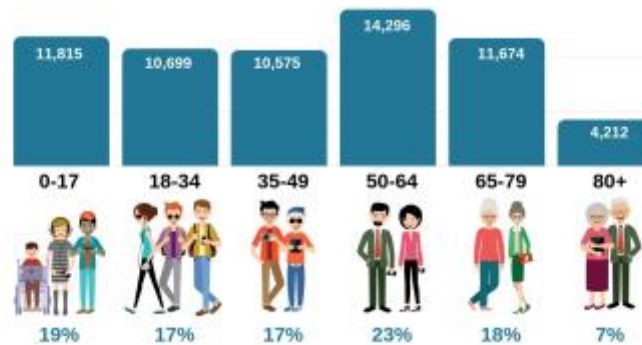
```
Embed://<iframe width="600" height="600"  
src="https://app.powerbi.com/view?r=eyJrIjoimTCyZmZlMzItODM5NC00OTU1LThiYTktMTBmNWEmMzk1OTAYliwidCI6ImMwMWQ5ZWUxLTBIYjAtNDc1NC05OWFILTazYWU4YTczMmI1MCIslmMiOjh9"  
frameborder="0" allowFullScreen="true"></iframe>
```

Population



The rest of the population are widely dispersed in smaller centres, hamlets and across many rural properties.

The age bandings spread is reasonably even across the North Powys area.



Travel times to Hospitals and Transport routes

Embed://<iframe width="800" height="600"

src="https://app.powerbi.com/view?r=eyJrIjoiaMGZjZjdlNTtMDZlOC00ZDYwLTk3ODctYjAxMDIkdNDgzOT
hjliwidCI6ImMwMWQ5ZWUxLTBIYjAtNDc1NC05OWFILTazYWU4YTczMml1MCI6ImMiOjh9"
frameborder="0" allowFullScreen="true"></iframe>

Introduction

We conducted a detailed analysis of over 40 datasets.

These were split into the following reports:

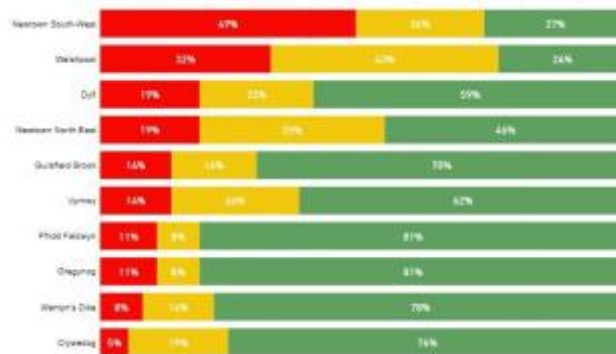
- Focus on Wellbeing
- The Big Four
- Joined Up Care

We have used the same methodology in all three reports and coloured an area red, amber or green (RAG) depending on how far off the Powys Average (mean average) they are.

The method we have used to calculate the Powys Average is:



Main findings



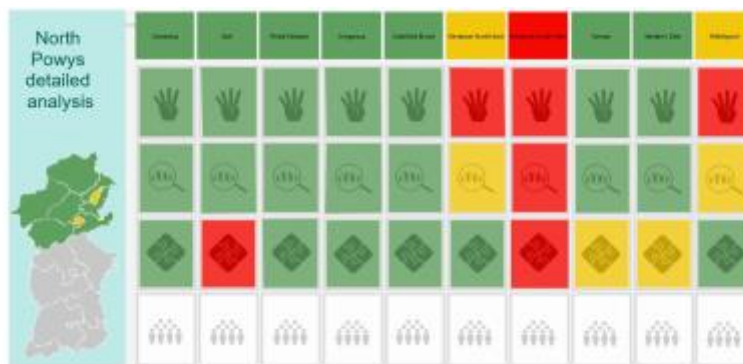
The Total Pressure Points visual shows the overall percentage of RAG (Red, Amber and Green) indicators in each North Powys Middle Super Output Area (MSOA).

This is calculated by counting each RAG for every data set we have analysed over all reports (Focus on Wellbeing, The Big 4 and Joined Up Care) and converting this into a percentage. There is variation in red, amber and green across all ten MSOAs in North Powys.

The MSOA with the largest proportion of red is **Newtown South-West** (red status for the Big Four, Focus on Wellbeing and Joined Up Care). Both **Newtown North East** and **Welshpool** had an overall amber status (red status for the Big Four, amber for Focus on Wellbeing and green for joined up care).

However, there are some interesting points to note particularly in terms of joined up care - whilst **Dyfi** is green overall, it had a red rating for Joined Up Care; and both **Vyrnwy** and **Wentyn's Dike** had an amber rating for joined up care.

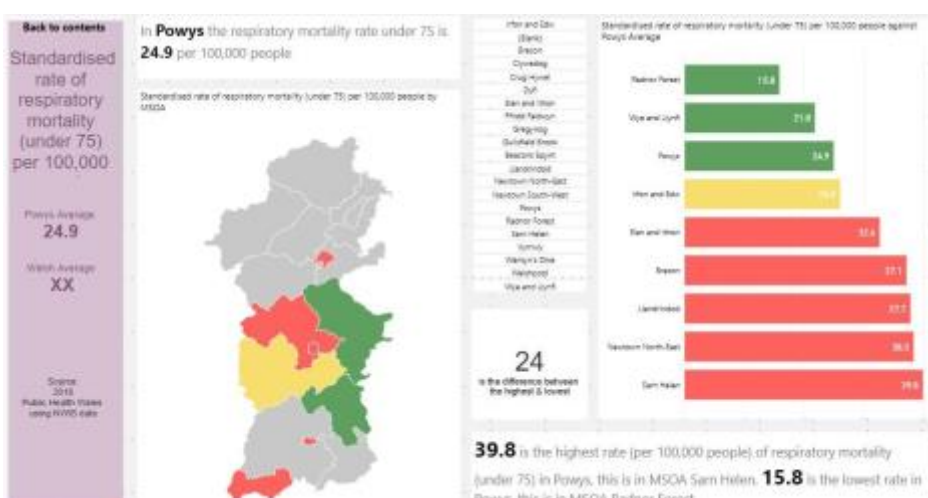
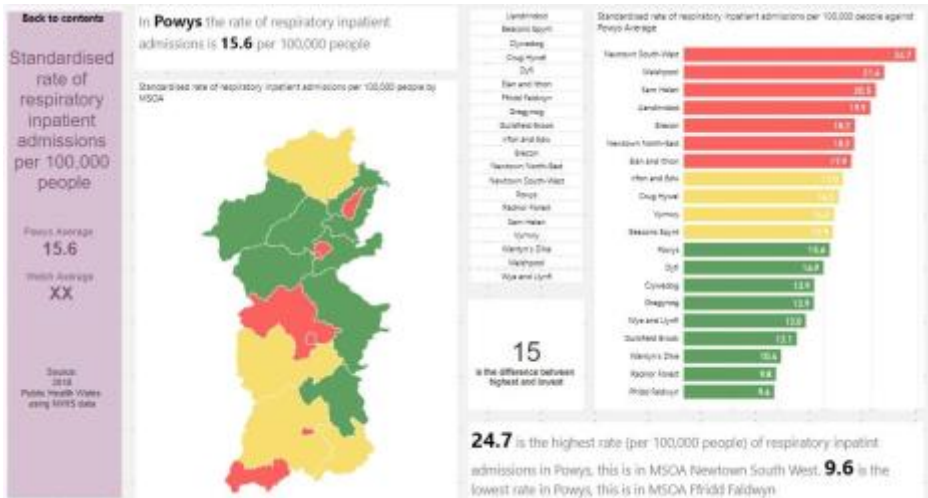
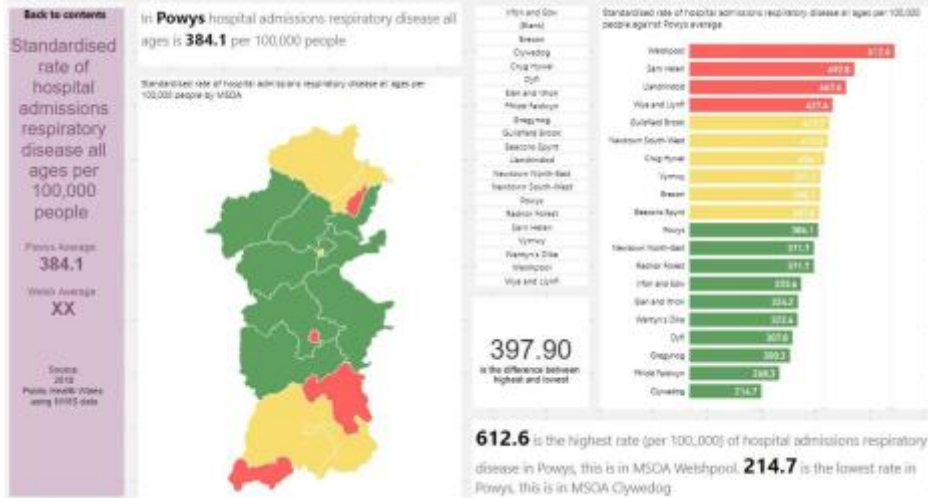
The following visual shows the variation across the ten areas in North Powys. The overall RAG for an area is shown on the top row, and the underlying rows represent The Big Four, Focus on Wellbeing and Joined Up Care. Workforce Futures has not been analysed at this stage.

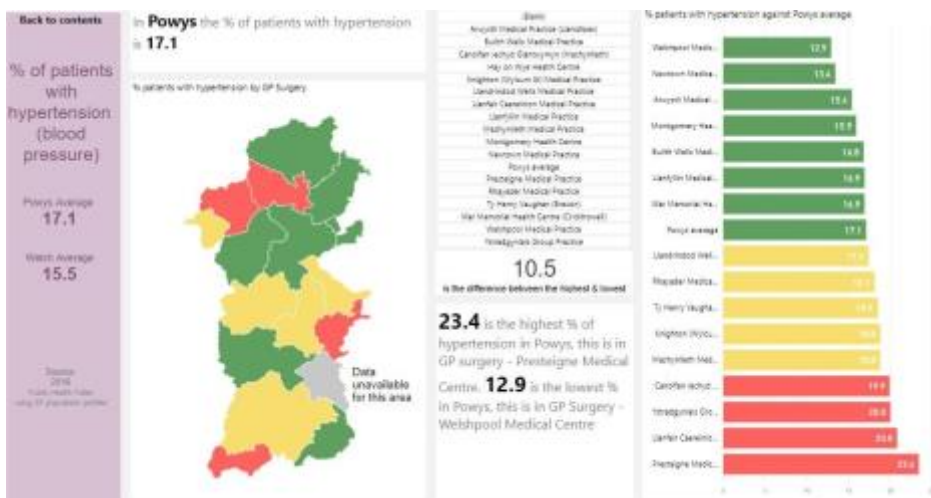
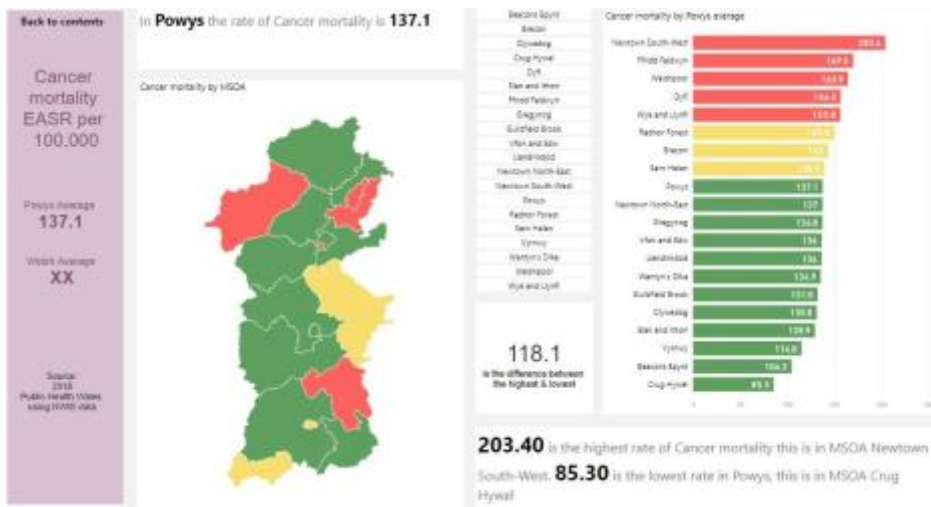
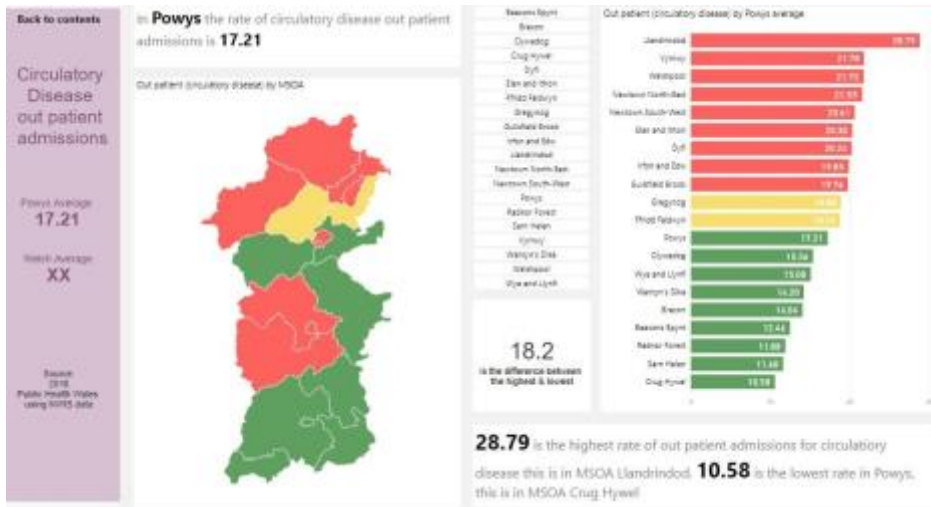


The Big Four

The North Powys area with the highest level of below average measures relating to the Big Four (cardiovascular, circulatory, respiratory disease and mental illness) is Welshpool

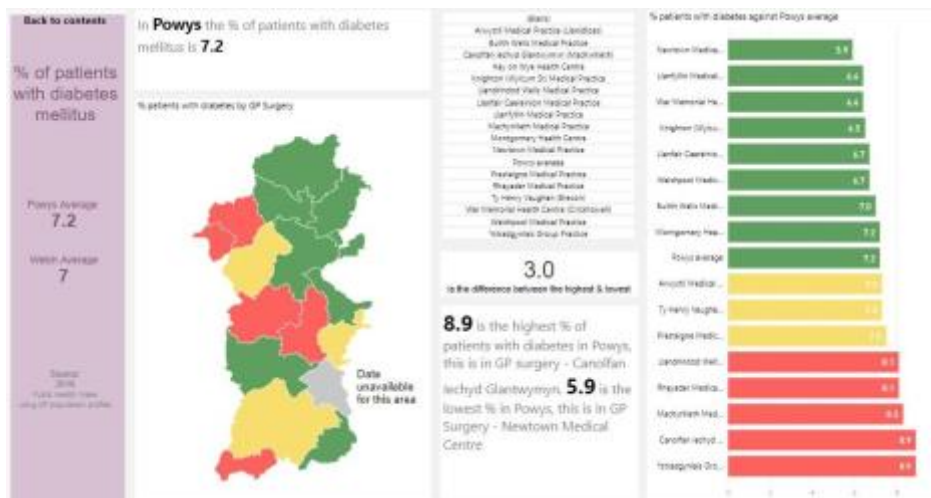
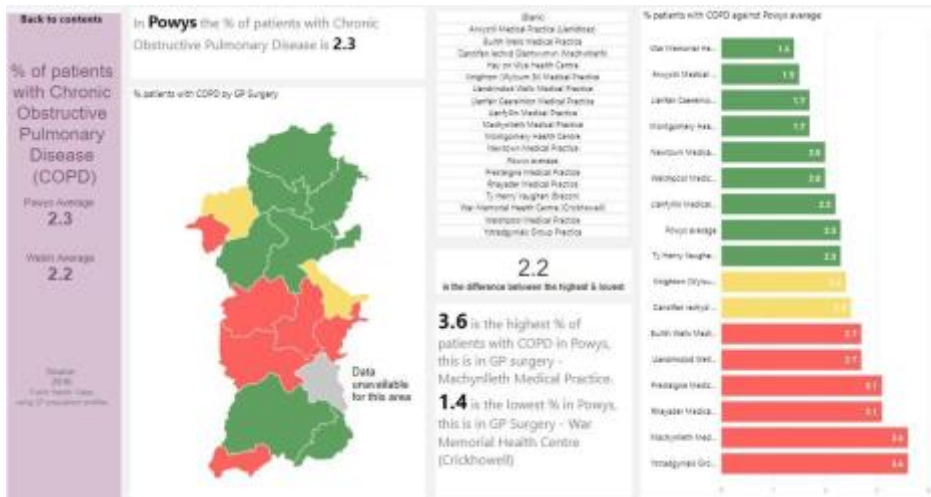
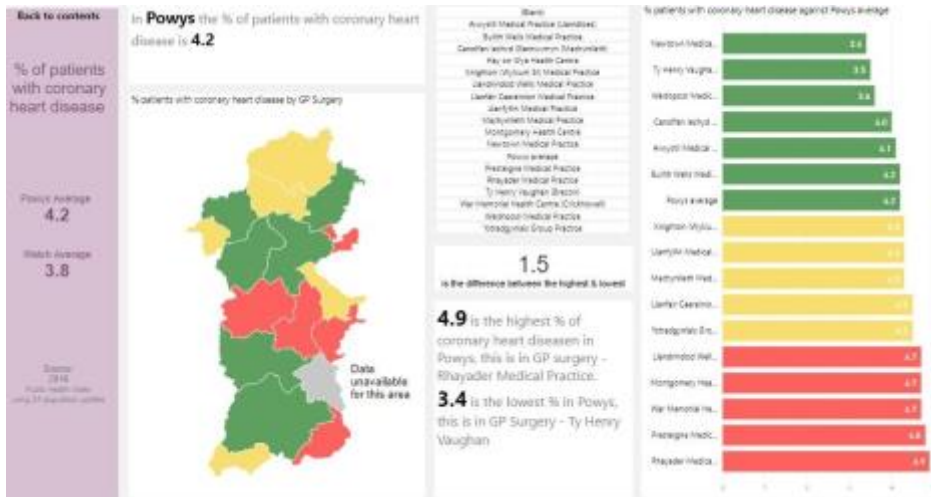
- **Hospital admissions** for respiratory diseases is highest in **Welshpool**
- **Respiratory inpatient admissions** are highest in **Welshpool and Newtown**
- **Respiratory mortality** for under 75's is above average in **Newtown North East**
- **Hospital admissions for cardio-vascular disease** is above average for **Welshpool, Dyfi and Newtown North East**

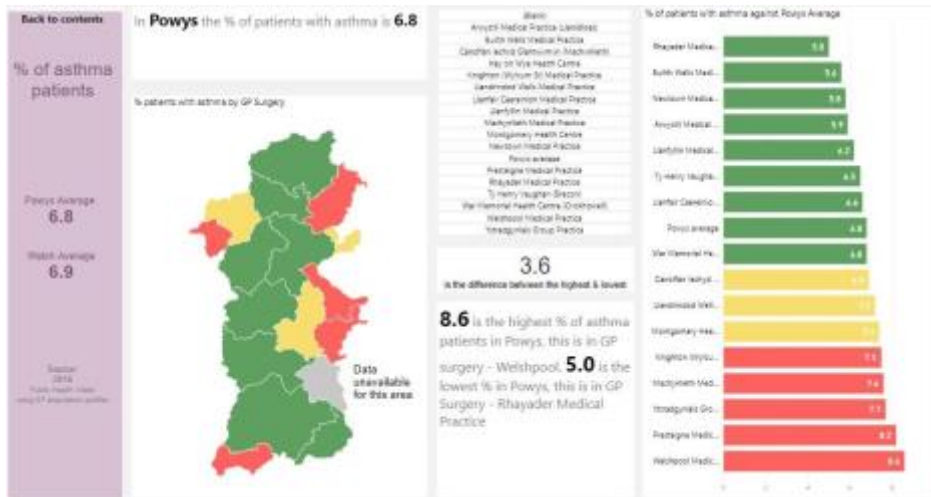




- Percentage of patients with **coronary heart disease** is above average in **Montgomery GP** practice area
- Patients with above average **COPD** rates are found in the **Machynlleth Health Centre** area

- Above average number of patients with **Diabetes** are found in the **Machynlleth** and **Glantwymyn** practice areas
- **Asthma** sufferers are above average of **Machynlleth** and **Welshpool** practices

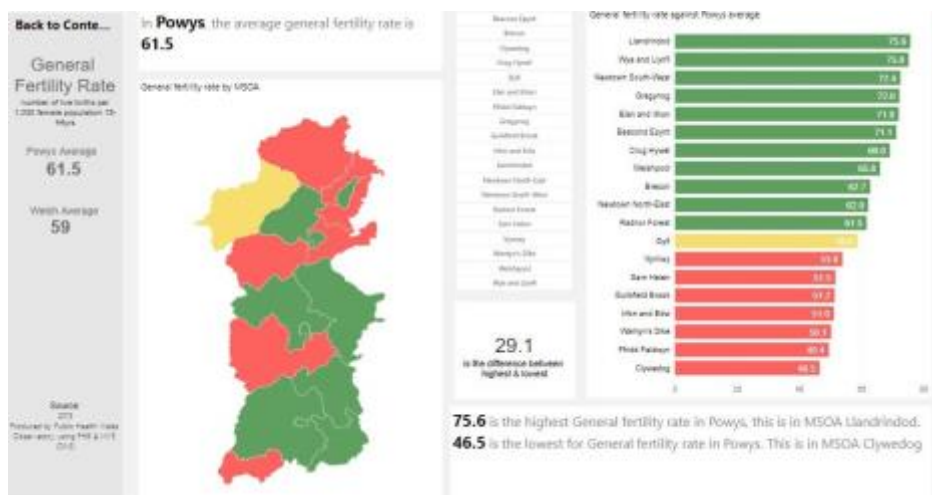




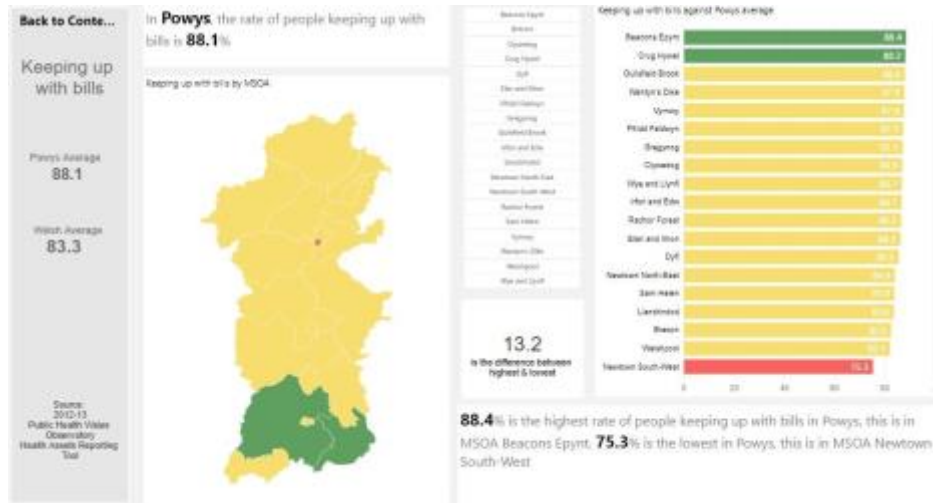
Focus on Well-being

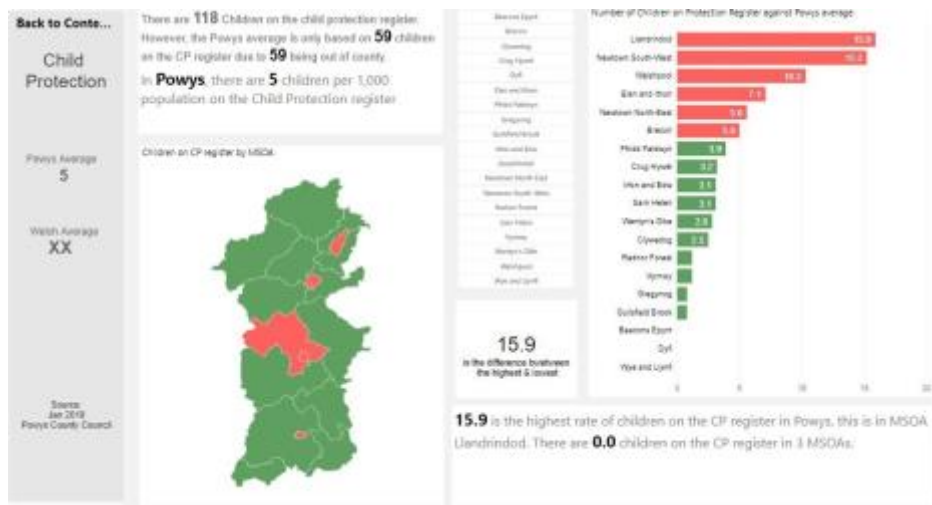
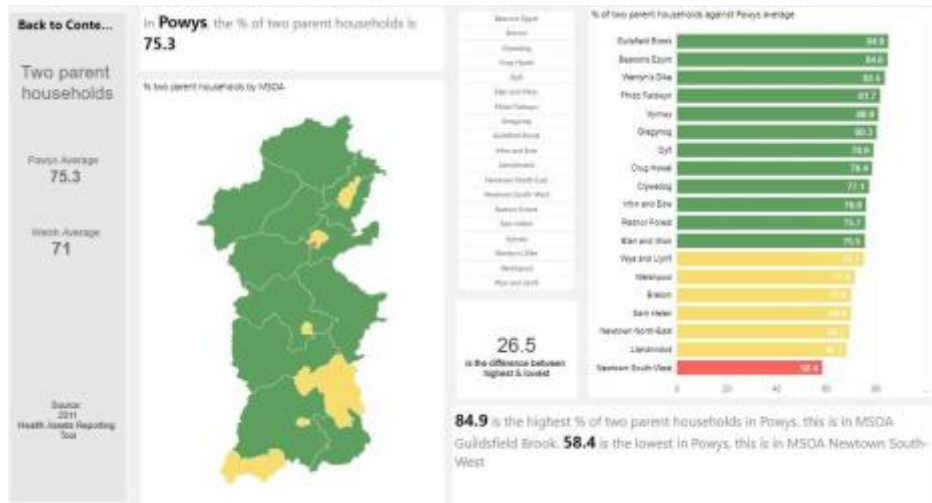
The North Powys area with the highest level of below average measures relating to well-being is Newtown South-West.

- **General fertility rate** is mostly lower in **more rural areas** of North Powys
- A higher average of **children are living in poverty** in **Newtown South West and Welshpool**
- The estimated number of people living with **dementia** has a higher average in the very north of Powys (**Vrynwy locality**)
- The **lowest levels of home ownership** for North Powys are in **Newtown and Welshpool**

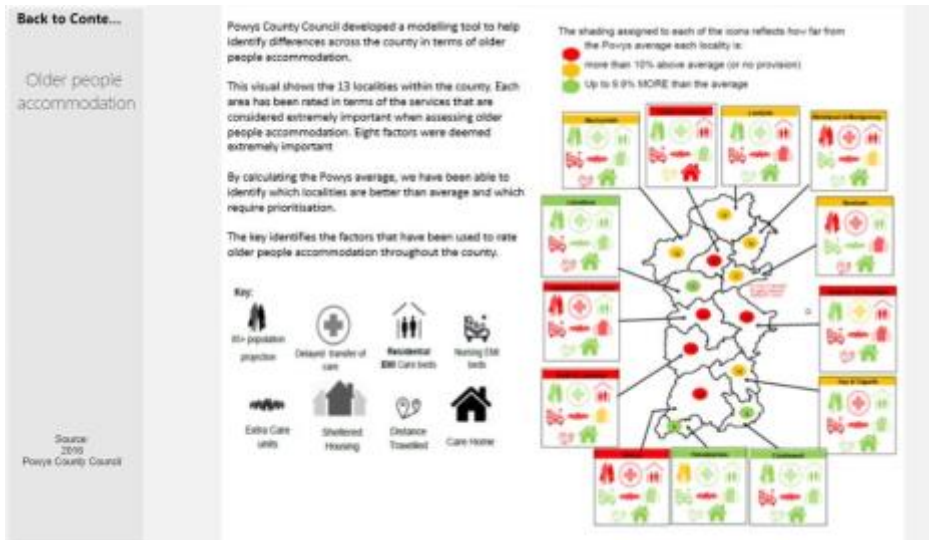


- The lowest level of satisfaction with the local area is **Newtown South West**
- Lowest levels of **two parent households** are in **Newtown South West**
- **Children on the child protection register** average rates are high in **Newtown and Welshpool**





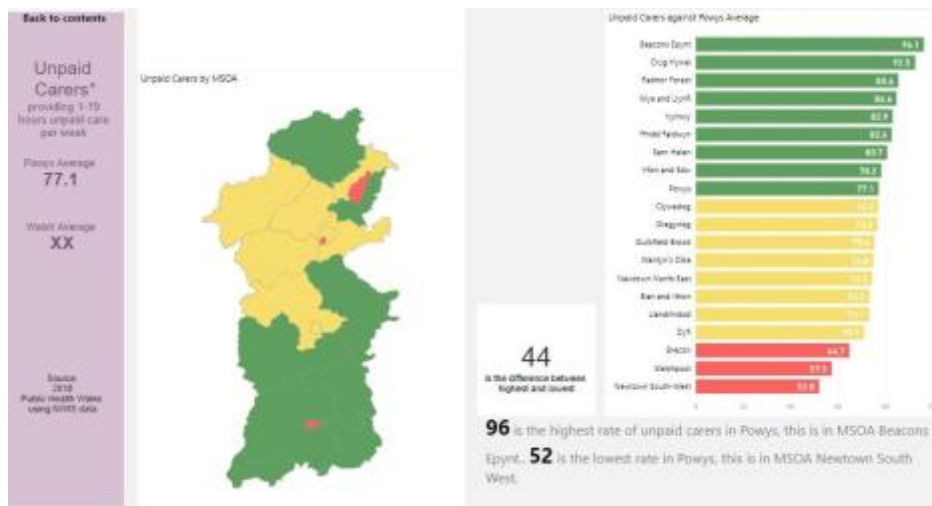
- Vaccination rates at age 4 are lowest in the **Wantyns Dike** ward
- Premature births have a higher average rate in **Newtown South West** and **Welshpool**
- Low birth weights are higher in **Newtown** and **Guldfeld Brook**, north of Welshpool
- There are more pressure points for **older people's accommodation** in the **Llanfair Caereinion** area



Joined up care

The North Powys area with the highest level of below average measures relating to joined up care is Newtown South West and the Dyfi areas

- The number of **unpaid carers** on average is higher in **Welshpool** and **Newtown South West**
- **Hip fractures** and more prevalent in **Newtown South West** and **Clywedog** localities
- **Satisfaction with GP's** is lower in **Newtown**, **Welshpool** and **Dyfi** localities



Area overview



<https://sway.office.com/K5dOVVrDpXhCYGcy#content=IC5Z5YUblY488I>

To see our full analysis click on the links below. If you would like to see a high level overview for each MSOA in the North, scroll down for more information.

Embed: `<iframe width="800" height="600" src="https://app.powerbi.com/view?r=eyJrIjoieYlTU3NjdHOTYtODEExZi00MWJkLTk1YTUyMDUxNGVhNjllYWNmIiwidCI6ImMwMWQ5ZUxLTBIjAtNDc1NC05OWFILTazYWU4YTczMm1lMCIscmMiOiJh9" frameborder="0" allowFullScreen="true"></iframe>`

Overview of each area

To view each area in detail please select the image below:



| | | | | | | | | | |
|--|--|--|--|--|--|--|--|--|--|
| | | | | | | | | | |
| | | | | | | | | | |
| | | | | | | | | | |
| | | | | | | | | | |
| | | | | | | | | | |
| | | | | | | | | | |
| | | | | | | | | | |
| | | | | | | | | | |
| | | | | | | | | | |
| | | | | | | | | | |
| | | | | | | | | | |
| | | | | | | | | | |
| | | | | | | | | | |
| | | | | | | | | | |
| | | | | | | | | | |
| | | | | | | | | | |
| | | | | | | | | | |
| | | | | | | | | | |
| | | | | | | | | | |
| | | | | | | | | | |
| | | | | | | | | | |
| | | | | | | | | | |
| | | | | | | | | | |
| | | | | | | | | | |
| | | | | | | | | | |
| | | | | | | | | | |
| | | | | | | | | | |
| | | | | | | | | | |
| | | | | | | | | | |
| | | | | | | | | | |
| | | | | | | | | | |
| | | | | | | | | | |
| | | | | | | | | | |
| | | | | | | | | | |
| | | | | | | | | | |
| | | | | | | | | | |
| | | | | | | | | | |
| | | | | | | | | | |
| | | | | | | | | | |
| | | | | | | | | | |
| | | | | | | | | | |
| | | | | | | | | | |
| | | | | | | | | | |
| | | | | | | | | | |
| | | | | | | | | | |
| | | | | | | | | | |
| | | | | | | | | | |
| | | | | | | | | | |
| | | | | | | | | | |
| | | | | | | | | | |
| | | | | | | | | | |
| | | | | | | | | | |
| | | | | | | | | | |
| | | | | | | | | | |
| | | | | | | | | | |
| | | | | | | | | | |
| | | | | | | | | | |
| | | | | | | | | | |
| | | | | | | | | | |
| | | | | | | | | | |
| | | | | | | | | | |
| | | | | | | | | | |
| | | | | | | | | | |
| | | | | | | | | | |
| | | | | | | | | | |
| | | | | | | | | | |
| | | | | | | | | | |
| | | | | | | | | | |
| | | | | | | | | | |
| | | | | | | | | | |
| | | | | | | | | | |
| | | | | | | | | | |
| | | | | | | | | | |
| | | | | | | | | | |
| | | | | | | | | | |
| | | | | | | | | | |
| | | | | | | | | | |
| | | | | | | | | | |
| | | | | | | | | | |
| | | | | | | | | | |
| | | | | | | | | | |
| | | | | | | | | | |
| | | | | | | | | | |
| | | | | | | | | | |
| | | | | | | | | | |
| | | | | | | | | | |
| | | | | | | | | | |
| | | | | | | | | | |
| | | | | | | | | | |
| | | | | | | | | | |
| | | | | | | | | | |
| | | | | | | | | | |
| | | | | | | | | | |
| | | | | | | | | | |
| | | | | | | | | | |
| | | | | | | | | | |
| | | | | | | | | | |
| | | | | | | | | | |

| | | | | | | | | | |
|---|---|---|---|---|---|---|--|---|---|
|  Person |  Person |  Person |  Person |  Person |  Person |  Person |  Person |  Person |  Person |
|  Person |  Person |  Person |  Person |  Person |  Person |  Person |  Person |  Person |  Person |
|  Person |  Person |  Person |  Person |  Person |  Person |  Person |  Person |  Person |  Person |
|  Person |  Person |  Person |  Person |  Person |  Person |  Person |  Person |  Person |  Person |
|  Person |  Person |  Person |  Person |  Person |  Person |  Person |  Person |  Person |  Person |

Ffridd Faldwyn